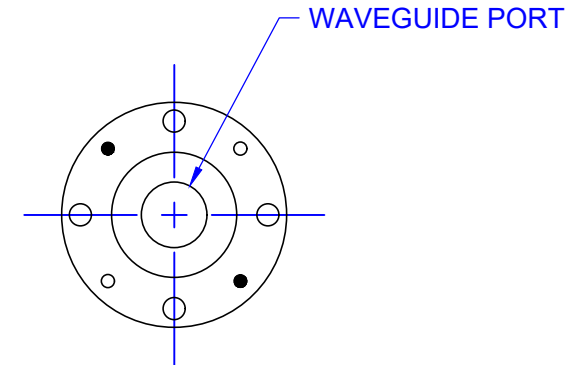
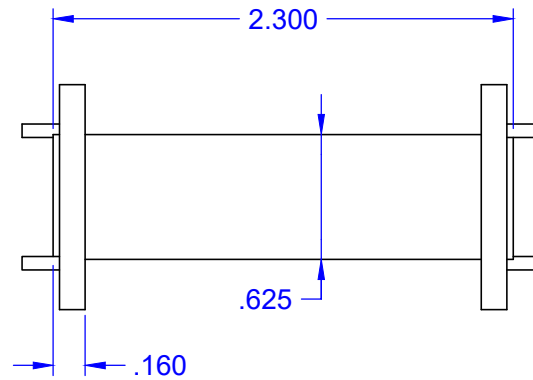
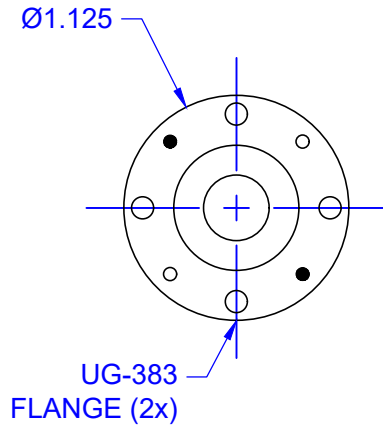


REVISIONS			
REV	DESCRIPTION	DATE	APPROVED
--	--	--	--



CIRCULAR WAVEGUIDE PORT INNER DIAMETER
0.328
0.396
0.470

QTY	PART NUMBER	OUTLINE DESCRIPTION	ITEM
--	--	OUTLINE DESCRIPTION	--
UNLESS OTHERWISE SPECIFIED ALL SURFACES $\sqrt{32}$		<p>THIRD ANGLE PROJECTION</p>	<p>Mi-Wave Millimeter Products Inc.</p>
DIMENSIONS ARE IN INCHES TOLERANCES ARE: DECIMALS: .1234 +/- .0005 .123 +/- .005 .12 +/- .01 ANGLES: +/- .5 DEGREES ALL THREADS TO BE 2A OR 2B			
REF DWG# --		DRAFTING: K.S.	SIZE <p>A</p>
ORIGINAL DWG# 20067		APPROVED: M.S.	
		DATE: 8/28/2013	DWG NO <p>22044</p>
		SHEET NO. 1 OF 1	