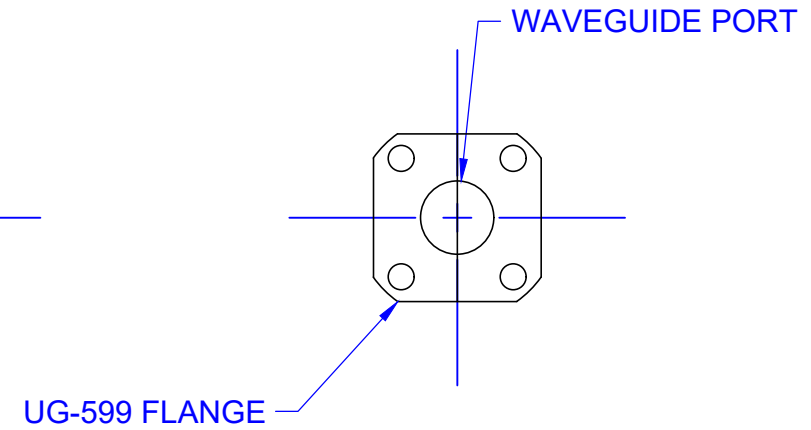
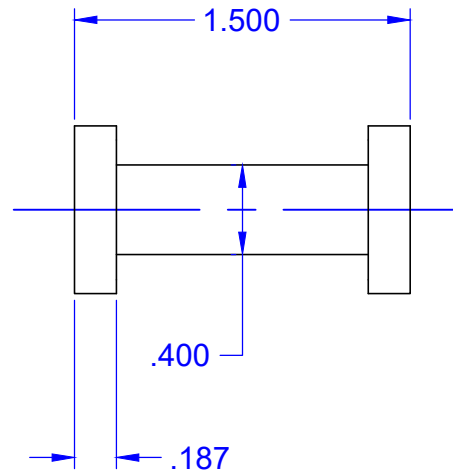
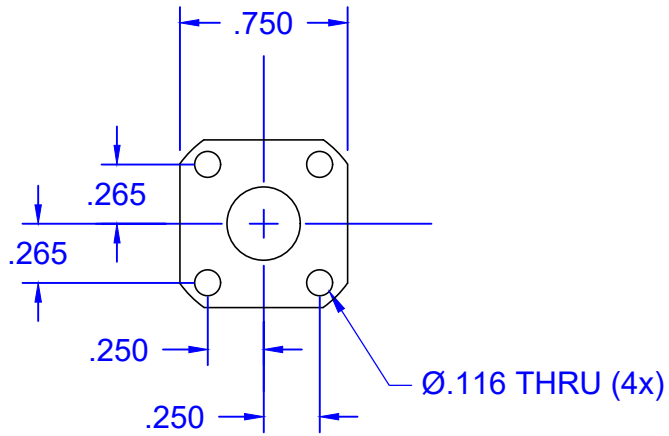


REVISIONS			
REV	DESCRIPTION	DATE	APPROVED
--	--	--	--



CIRCULAR WAVEGUIDE PORT INNER DIAMETER
0.219
0.250
0.281
0.328

QTY	PART NUMBER	MATERIAL: 1/2 HARD BRASS (Ø1.125")		DESCRIPTION	ITEM
UNLESS OTHERWISE SPECIFIED		 THIRD ANGLE PROJECTION		Mi-Wave Millimeter Products Inc.	
ALL SURFACES $\sqrt{32}$					
DIMENSIONS ARE IN INCHES TOLERANCES ARE: DECIMALS: .1234 +/- .0005 .123 +/- .005 .12 +/- .01 ANGLES: +/- .5 DEGREES		DRAFTING: K.S. APPROVED: M.S.		TITLE 282A-599 OUTLINE	
ALL THREADS TO BE 2A OR 2B		DATE: 6/5/2018			
REF DWG# --		SHEET NO.	OF	SIZE	DWG NO
ORIGINAL DWG# 20067		1	1	A	25683