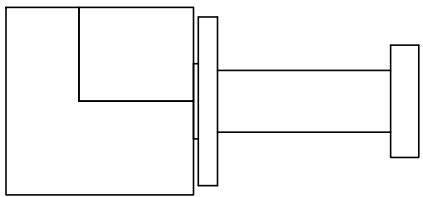
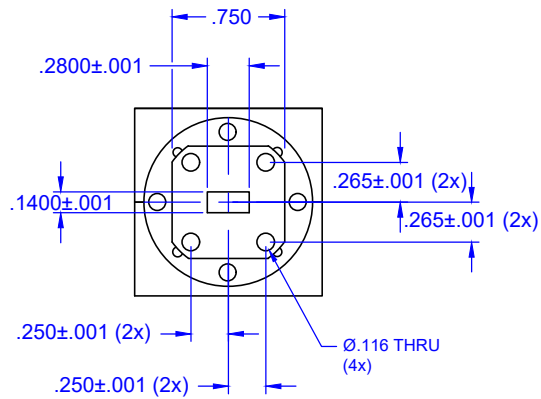
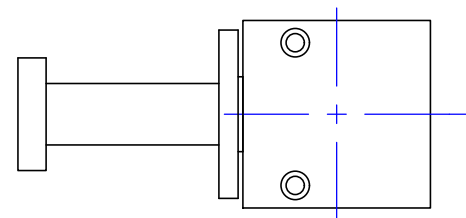
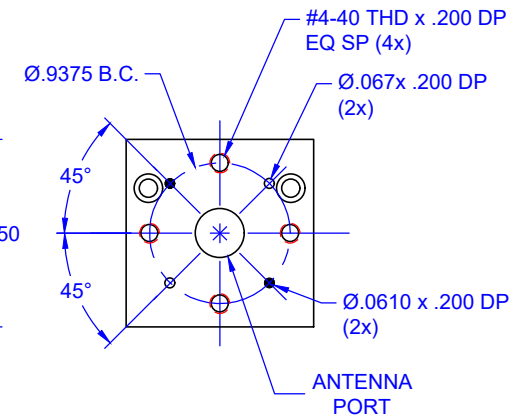
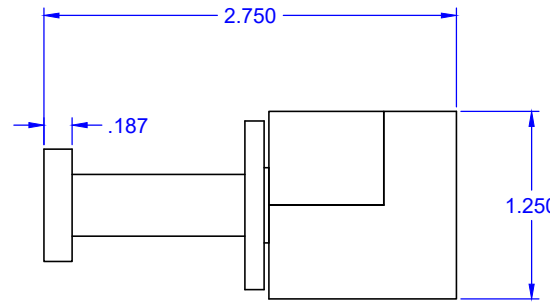
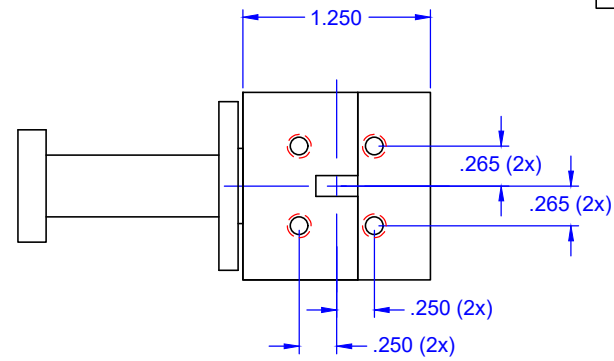


REVISIONS			
REV	DESCRIPTION	DATE	APPROVED
--	--	--	--



ANTENNA PORT
0.2190
0.2500
0.2810
0.3280

QTY	PART NUMBER	DESCRIPTION	ITEM
	UNLESS OTHERWISE SPECIFIED ALL SURFACES $\sqrt{32}$	 THIRD ANGLE PROJECTION	Mi-Wave Millimeter Products Inc. 281A_599_OUTLINE
	DIMENSIONS ARE IN INCHES TOLERANCES ARE: DECIMALS: .1234 +/- .0005 .123 +/- .005 .12 +/- .01 ANGLES: +/- .5 DEGREES		
	ALL THREADS TO BE 2A OR 2B	DRAFTING: C.C. APPROVED: M.S. DATE: 11/6/20	SIZE A DWG NO 25603
REF DWG# --		SHEET NO. 1 OF 1	