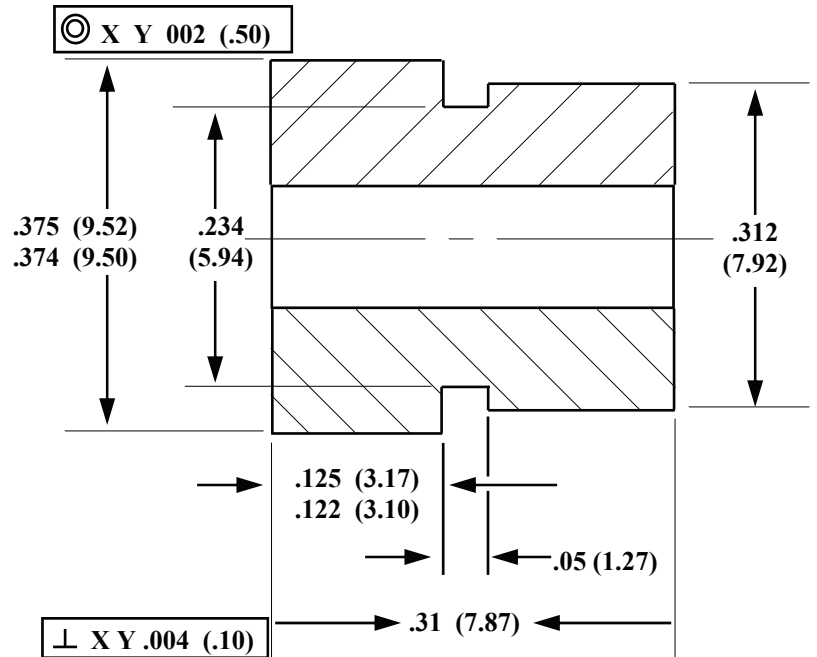
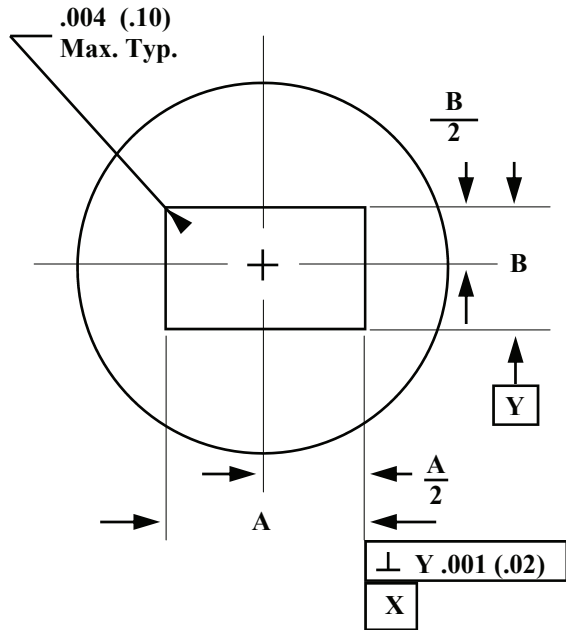


# Appendix E Flange Blanks

## For Pin Type Flange



<i>miw</i> Band	TRG Part No.	Frequency Band (GHz)	A $\pm .001$ (.02)	B $\pm .001$ (.02)	EIA Waveguide Designation
F	714	90.0 140.0	.143 (3.63)	.103 (2.62)	WR 8
D	716	110.0 170.0	.128 (3.25)	.098 (2.49)	WR 7
G	715	140.0 220.0	.115 (2.92)	.089 (2.26)	WR 5
H	717	170.0 260.0	.430 (1.09)	.0845 (2.15)	WR 4
J	718	220.0 325.0	.106 (2.69)	.080 (2.03)	WR 3